



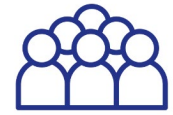
Navigating Belize

Logistical and
Practical Support

Rachel Jensen
Expat Liaison



You Made it to Belize!



~400,000



English



US\$1,760
mill



Belize Dollar
\$2BZD to \$1USD



Wait, where am I?





At 8,867 square miles, Belize is about the same size as the U.S. state of Massachusetts.



- 180 Miles North to South
- 70 Miles East to West
- 3,500 feet at its highest
- 400+ Cayes

Am I saying that correctly?

Caye = "KEY"

San Ignacio = "Ig nah- see- oh"

Ambergris = "Am - ber - GRIS"

Xunantunich = "Zoo - naan- too - nitch"

Placencia = Pla- sense- ee - ahh"

Garifuna = Gar- ahh- FOO - na



Good Morning
"Gud Mawnin" - Creole
"Buiti Binafi" - Garifuna
"Buenos Dias" - Spanish





Getting To, From & Around Belize



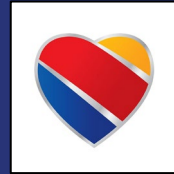
Direct Flights to & from the USA



American Airlines

FROM Miami, Charlotte, Dallas
Ft. Worth, and L.A.

www.aa.com



Southwest Airlines

FROM Houston, Denver, and
Ft. Lauderdale

www.southwest.com



Delta Airlines

FROM Atlanta & Minneapolis

www.delta.com



United Airlines

FROM Denver, Houston, L.A.,
Newark, and Chicago

www.united.com



Sun Country Airlines

FROM Minneapolis

www.suncountry.com



Recently Added Direct Flights to & from the USA



Alaska Airlines

FROM Seattle & L.A.

www.alaskaair.com



Frontier Airlines

FROM Orlando & Denver

www.flyfrontier.com



Flights to & from Canada



WestJet Airlines

FROM Toronto

www.westjet.com



AirCanadaAirlines

FROM Toronto

www.westjet.com

Flights to & from Central America



Copa Airlines

FROM Panama

www.copaair.com



TAG Airlines

FROM Guatemala City

www.tag.com.gt/en



Tropic Air

FROM Mexico, Guatemala,
Honduras, El Salvador

www.tropicair.com

Traveling through Cancun

Many flights to Cancun from all over the world.

Often less expensive than flying directly into BZE.

Fly from Cancun to Belize

Tropic Air = ~\$375.00 USD (*One-way*)



Take the Overnight ADO Bus

Cancun to Belize City \$45.00 USD (*One-way*)



ADO Bus from Cancun to Belize City



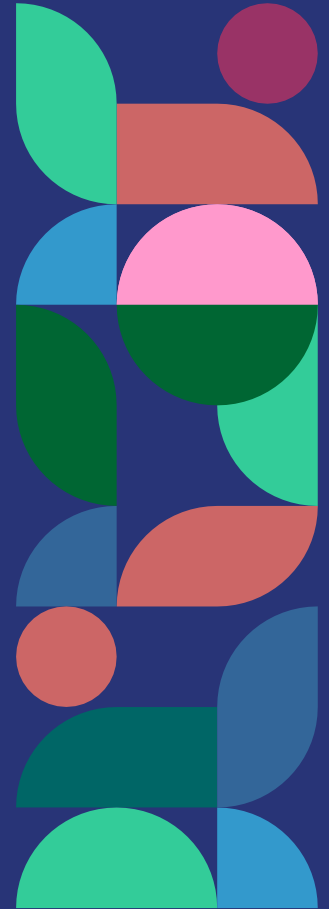
- Cost: \$45.00 USD (1 –way)
- Departure from Cancun: 7:30AM or 10:15PM
- About 8 hours
- At the border:
 - Mexico-side - Submit Departure Record and pay *Forma Migratoria Múltiple* (FMM) tax
 - Belize-side - Submit Immigration Form and get stamped. Walk your items through customs and submit the customs form.



www.ado.com.mx

Getting Around Belize

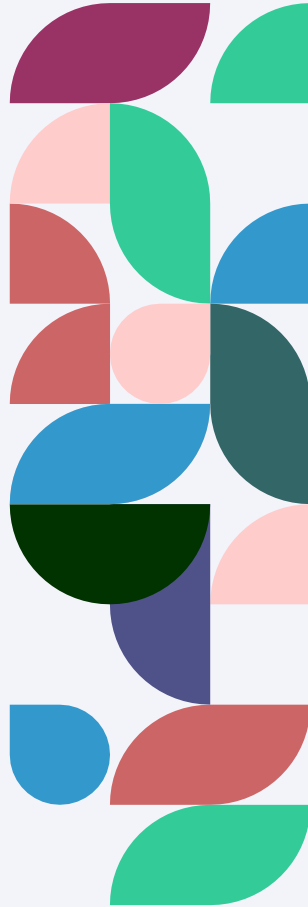
- Bus *(Most common w/ locals)*
- Taxi
- Rental Car
- Private Van/Bus
- Bike
- Water Taxi
- Domestic Flights
- Golf Cart



- Phillip Goldson Highway (*Northern Hwy*)
- George Price Highway (*Western Hwy*)
- Hummingbird Highway
- Southern Highway



The 4 Main Highways



Rental Cars

- Rates can vary from \$50-100 USD per day
- Many Auto-Rental agencies to choose from:
(Hertz, Crystal, Budget, Avis, & more)
- Safe
- Get a 4WD if you plan to adventure around

Driving in Belize

- Road conditions vary
- Passing a slow driver is very normal
- Buses and trucks drive fast
- Dogs, horses and whatever else!!
- Police Checkpoints
- **AVOID THE COASTAL HIGHWAY!**
- Speed Limits and Speed Bumps
- Gas = \$6.50 USD / gallon

Taxis

Look for the green license plate!

- Taxi Fare from Philip Goldson Int. Airport to Belize City = \$30.00 USD
- Short Taxi rides in and around the city = \$5 - \$10 USD
- Taxi Drivers are a great source of info and are proud to show you around
- Some drivers will do long distance trips
- If you find a driver you like, get their #
- New App: MiDriva (no Uber)



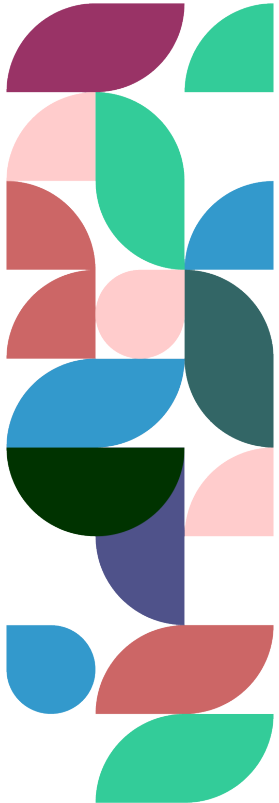


Private Vans Tour Companies

- There are many "Tour Guides" in Belize. They are licensed by the Belize Tourist Board. They will show their license.
- Many Tour companies own or have access to a van and offer transfers and/or tour services.
- This is also a great way to see the country!



Buses in Belize



- Buses are a common form of transportation in Belize but schedules, fares, and routes can be inconsistent.
- There is a main bus terminal in each district.
- **The “Regular Bus”** Makes frequent stops at bus stops.
- **The “Express Bus”** Only stops in main Towns. (*Recommended*)
- Signs indicating intended destination are posted in the front window.
- Expect to be confused & crowded. Keep your luggage within sight.
- Fares are often collected by a “Conductor” once you board the bus.
 - ***“Regular” Bus Prices***
 - Belize City to Belmopan = \$3.00 USD (~1.5 hours)
 - Belize City to Placencia = \$10.00 USD (~5 hours)
 - Belize City to San Ignacio = \$4.50 USD (~2 hours)

Killing time waiting
for the bus...

... Only to learn
the bus wasn't
operating on
Sunday.



Now they do (well most of the lines)... but check to see their holiday schedule!

	Name of Company	RSP Type	Benque Viejo		San Ignacio		Belmopan		Belize	Days of Operation
			Arrive	Depart	Arrive	Depart	Arrive	Depart	Arrive	
1	Silva's Bus Line	Express to S/E	2:00am	2:15am	2:30am	2:40am	3:25am	3:40am	4:55am	Mon to Sun
2	J & J Bus Line(NowWestline)	Regular	2:15am	2:30am	2:45am	3:00am	4:00am	4:15am	5:45am	Mon to Sun
3	J & J Bus Line(NowWestline)	Regular	2:45am	3:00am	3:15am	3:30am	4:30am	4:45am	6:15am	Mon to Sun
4	Silva's Bus Line	Regular	3:15am	3:30am	3:45am	4:00am	5:00am	5:15am	6:45am	Mon to Sun
5	Silva's Bus Line	Express to S/E	3:15am	3:30am	3:45am	4:00am	4:45am	5:00am	6:15am	Mon to Sun
6	Silva's Bus Line	Regular	3:30am	3:45am	4:00am	4:15am	5:15am	5:30am	7:00am	Mon to Sun
7	Silva's Bus Line	Regular	4:00am	4:15am	4:30am	4:45am	5:45am	6:00am	7:30am	Mon to Sun
8	Silva's Bus Line (Will Continue to S/E)	Express	4:30am	4:45am	5:00am	5:15am	6:00am	6:15am	7:15am	Mon to sun
9	Maria Rodriguez	Workers					6:00am	6:15am	7:30am	Mon to Fri
10	Silva's Bus Line	Regular	4:30am	4:45am	5:00am	5:15am	6:15am	6:30am	8:00am	Mon to Sun
11	Westline	Regular	5:00am	5:15am	5:30am	5:45am	6:45am	7:00am	8:30am	Mon to Sun
12	Westline	Express	5:00am	5:15am	5:30am	5:45am	6:30am	6:45am	8:00am	Mon to Sun
13	Westline	Direct	5:15am	5:30am	5:45am	6:00am			7:30am	Mon to Fri
14	Westline	Express	5:30am	5:45am	6:00am	6:15am	7:00am	7:15am	8:30am	Mon to Sat
15	Westline	Regular	5:30am	5:45am	6:00am	6:15am	7:15am	7:30am	9:00am	Mon to Sun
16	Westline	Express	6:00am	6:15am	6:30am	6:45am	7:30am	7:45am	9:00am	Mon to Sat
17	Westline	Regular	6:00am	6:15am	6:30am	6:45am	7:45am	8:00am	9:30am	Mon to Sun
18	Westline	Workers Exp	6:15am	6:30am	6:45am	7:00am	7:45am			Mon to Fri
19	Westline	Workers Exp	6:30am	6:45am	7:00am	7:15am	8:00am			Mon to Fri
20	Silva's Bus Line	Workers Exp	6:35am	6:50am	7:05am	7:20am	8:05am			Mon to Fri
21	Westline	Regular	6:45am	7:00am	7:15am	7:30am	8:30am	8:45am	10:15am	Mon to Sun
22	Westline	Express	6:45am	7:00am	7:15am	7:30am	8:15am	8:30am	9:45am	Mon to Sat
23	Westline	Regular	7:15am	7:30am	7:45am	8:00am	9:00am	9:15am	10:45am	Mon to Sun
24	Westline	Regular	7:45am	8:00am	8:15am	8:30am	9:30am	9:45am	11:15am	Mon to Sun
25	Westline	Express	7:45am	8:00am	8:15am	8:30am	9:15am	9:30am	10:45am	Mon to Sat
26	BBOC	Express	8:10am	8:25am	8:40am	8:45am	9:30am	9:45am	11:00am	Mon to Fri
27	BBOC	Regular	8:15am	8:30am	8:45am	9:00am	10:00am	10:15am	11:45am	Mon to Sun
28	BBOC	Regular	8:45am	9:00am	9:15am	9:30am	10:30am	10:45am	12:15pm	Mon to Sun

Water Taxi



- Belize City to Caye Caulker & San Pedro
- Daily trips to the Cayes on/around the hour.
- Okay to bring your luggage, dog, bike... but no pigs or fireworks.



Domestic Flight

- Small Cessna Planes (3-14 passenger)
- Multiple daily flights to popular destinations around Belize and the surrounding area
- Tickets can be purchased online or at airline offices
- Tickets Prices range from ~\$90-\$200USD one way
- More expensive than Water Taxi
- Much quicker and great aerial perspective of Belize



Internet

- Fiber Optic Internet in most locations
- Apps: FaceTime, WhatsApp, Skype, and Zoom
- Usually at least two main Cable/Internet providers in each town.
- Plans start around \$35USD/month
- Can pay online



Phone

- Stop into any BTL or SMART office. They are in every town.
- Single-Line Pre-Paid Plans starting at ~ \$30 US - [8GB Data +]
- Pre-Paid and Post-Paid Plans (post-paid for residents only)
- Some phones have slots for 2 SIM Cards
- International carrier plans



Utilities

Water (BWS)
Belize Water Services



Electricity (BEL)
Belize Electricity Limited



- Not all properties have public electricity or water
- Make sure your property is individually metered
 - Can pay online
- Transfer via notarized letter from original owner with passport picture page copy



Banks

International(USD)

Caye Bank

Domestic(BZD)

Atlantic, Heritage, Belize Bank

- Expect lines
- It is challenging to open an account as a foreigner
- Get a USD bank card w/o transfer fees
- ATMs are safe to use (only have BZD)

Shopping

- ❑ Many places close for lunch.
- ❑ Buy it when you see it! It may be gone when you come back.
- ❑ Look in the deep freezers.
- ❑ Look for local products (peanut butter, tortillas, jams, bread, dairy products).
- ❑ CHECK THE EXPIRATION DATES!!



Local Shopping

Fruit Stands



Markets



Shopping

Household Goods

- Mirab
- Courts
- A&R
- Dibary
- Boutiques
- Brodies

Grocery Shopping

- Brodies (B.C. and Belmopan)
- Chinese Super Markets
- Publics (not *Publix*)
- Save U
- Produce stands and Markets

Hardware Stores

- Benny's
- Farmers Trading Center (*Spanish Lookout*)
- Habet & Habet
- Builders Hardware
- Castillos

Shopping Amazon!

Belize... Where Amazon Prime means
2 weeks, not 2-days!



Dining Out



Ceviche



Rice & Beans



Fry Jacks



Tamales



Johnny Cakes



Belikin Beer



Marie Sharps
Pepper Sauce



Panty Rippa

Dining Ou



Tipping:
15-20%



Don't be shy
if you need
something.



You'll likely
need to ask
for the bill.

Getting Connected

Facebook

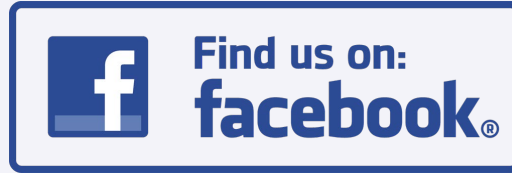
- Belize Buy, Sell, Trade
- Expats in Belize
- San Pedro Scoop

The Local News

- The Amandala Newspaper
- The Reporter Newspaper
- The Guardian
- Channel 7
- Channel 5

Organizations

- Rotary Club
- American Chamber of Commerce
- Belize Sailing Association
- Various Expat Groups





Final Tips:

- “Right now”→
”When I get to it”
- Pack your
patience!!



Now
you're all
set!

(more or less



INFO @LUNAREALTYBELIZE.COM

